

### Features

- Designed to meet vibration and/or shock per ISA specification S71.03C2. High shock construction
- Handles aggressive atmosphere per salt resistance testing (ASTM B117)
- Most hardware is stainless steel, and all aluminum components are hard anodized and Nituff<sup>®</sup> coated for corrosion resistance
- Manual reset housing is sealed with closed-cell CR sponge rubber, and equipped with a sintered bronze breather to prevent condensation
- Last chance filter installed in auxiliary air port of the pilot valve
- Intrinsically Safe and General Service constructions available

Nituff is a registered trademark of Nimet Industries, Inc.

### Construction

Valve Parts in Contact with Fluids	
Main Valve	
Body	Brass
Disc	303 Stainless Steel
Seats	Phosphor Bronze
Springs	17-7 PH Stainless Steel
Seals	FKM
Air Operator Diaphragm	FMQ
Bearing Screw	430 Stainless Steel
Lever	302 Stainless Steel
Low Power Pilot Valve (1.4 watts)	
Body	Brass
Seals	Low Temperature NBR
Rider Rings	PTFE
Spring Retainer	CA
Core and Plugnut	430F Stainless Steel
Sleeve	304L Stainless Steel
Core Springs	302 Stainless Steel

### Electrical

Standard Coil and Class of Insulation	Watt Rating and Power Consumption				Spare Coil Part Number DC	
	DC Watts	AC			General Purpose	Explosionproof
		Watts	VA Holding	VA Inrush		
F	1.4	-	-	-	238710-902-D	238714-902-D

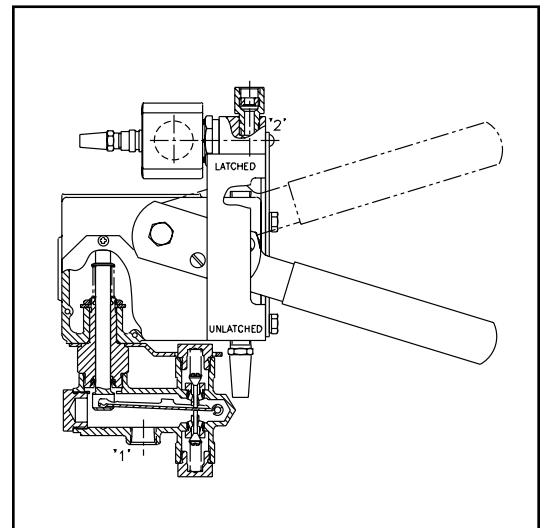
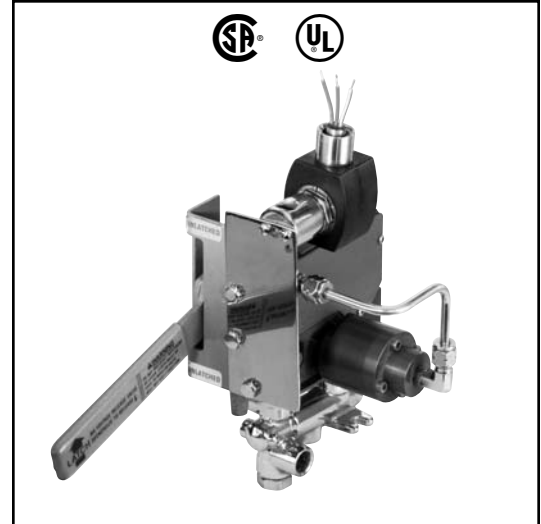
Standard Voltages: 12 and 24 volts DC, +10% -15%.  
Other voltages are available when required.

### Solenoid Enclosures

**Standard:** Explosionproof and Watertight, Types 3, 3S, 4, 4X, 6, 6D, 7, and 9.

### Approvals

CSA certified and UL listed General Purpose Valve (pilot).



SPECIAL SERVICE PILOT

### Options

Stainless steel body; 1/8" to 1/2" NPT pipe sizes; position indicator switch; main valve resilient seats; 4-way construction with metering; pneumatic time delay; redundant pilot valves.

Contact factory for ordering information.

### Operation Alternatives

**Electrically Tripped** – Manually move the lever to the latched position with the solenoid de-energized. Trips when solenoid is energized. Once tripped, the lever may be cycled causing the valve discs to open and close.

**No Voltage Release** – Manually move the lever to the latched position with the solenoid energized. Trips when solenoid is de-energized. Once tripped, the lever may be cycled causing the valve discs to open and close.

**Specifications (English units)**

MAIN VALVE - AC or DC Constructions					
Pipe Size (ins.)	Orifice Size (ins.)	Cv Flow Factor	Operating Pressure Differential (psi)		Max. Fluid and Ambient Temp. °F
			Min.	Max.	
3/8	1/4	.45	0	125	200

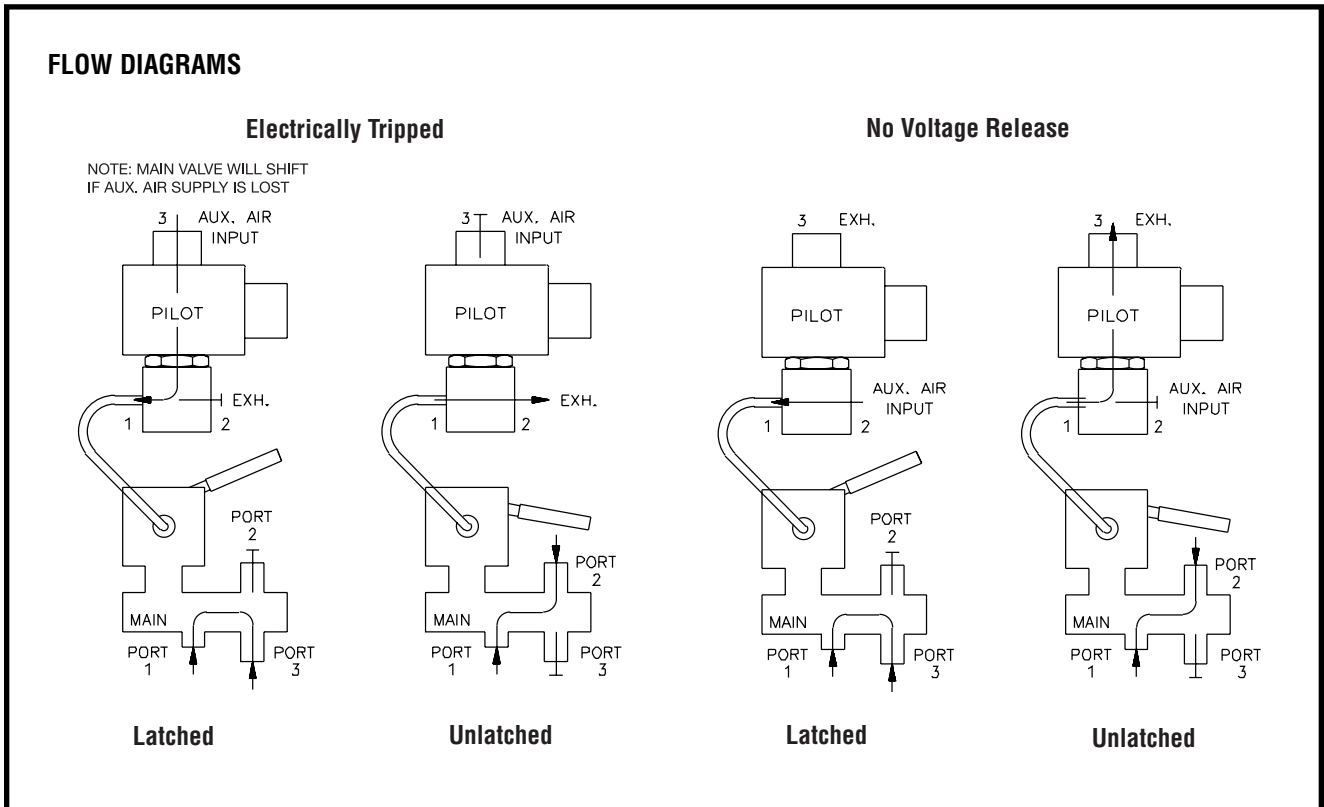
Catalog Number	Construction Type	Pilot Pressure (psi)		Fluid Temp. °F		Ambient Temp. °F		Watt Rating/Class of Coil Insulation	Pilot Valve (For reference only)
		Min.	Max.	Min.	Max.	Min.	Max.		
HV264153-13	No Voltage Release	25	125	-40	140	-40	140	1.4/F	EF8314G300
HV264153-14	Electrically Tripped	25	125	-40	140	-40	140	1.4/F	EF8314G300

**Specifications (Metric units)**

MAIN VALVE - AC or DC Constructions					
Pipe Size (ins.)	Orifice Size (mm)	Kv Flow Factor (m3/h)	Operating Pressure Differential (bar)		Max. Fluid and Ambient Temp. °C
			Min.	Max.	
3/8	6	0.39	0	9	93

Catalog Number	Construction Type	Pilot Pressure (bar)		Fluid Temp. °C		Ambient Temp. °C		Watt Rating/Class of Coil Insulation	Pilot Valve (For reference only)
		Min.	Max.	Min.	Max.	Min.	Max.		
HV264153-13	No Voltage Release	2	9	-40	60	-40	60	1.4/F	EF8314G300
HV264153-14	Electrically Tripped	2	9	-40	60	-40	60	1.4/F	EF8314G300

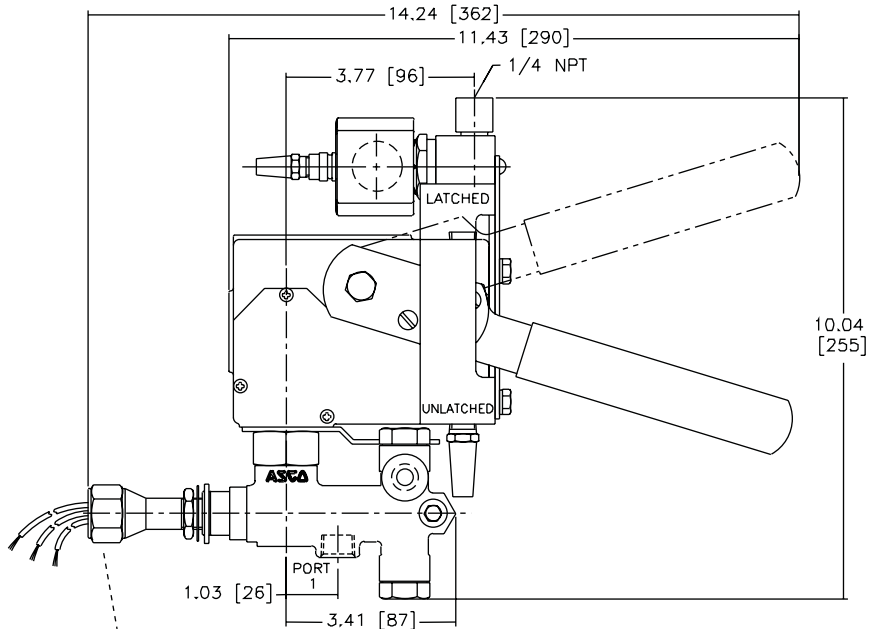
**Dimensions: inches (mm)**



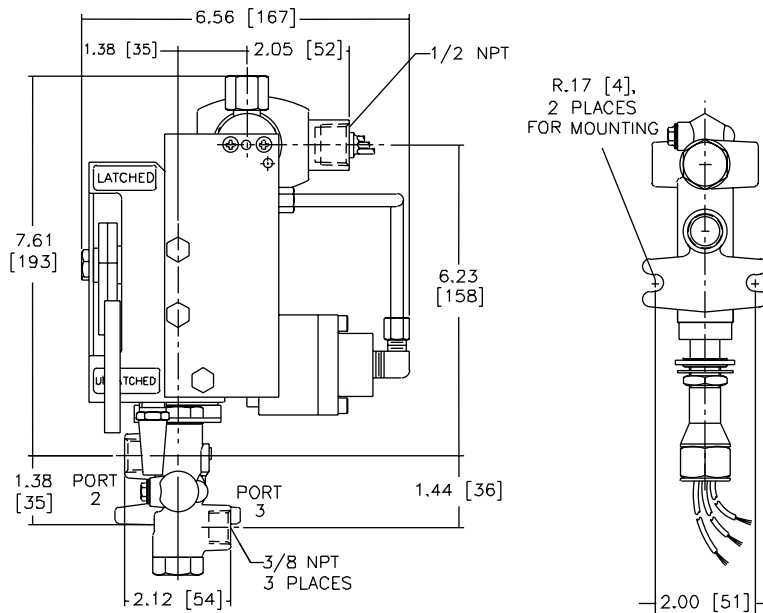
SPECIAL SERVICE PILOT

**Dimensions: inches (mm)**

**No Voltage Release Construction**



Shown with  
Optional Position  
Indicator Switch



**IMPORTANT: Mount with manual reset operator vertical and upright.**

**SPECIAL SERVICE  
PILOT**

